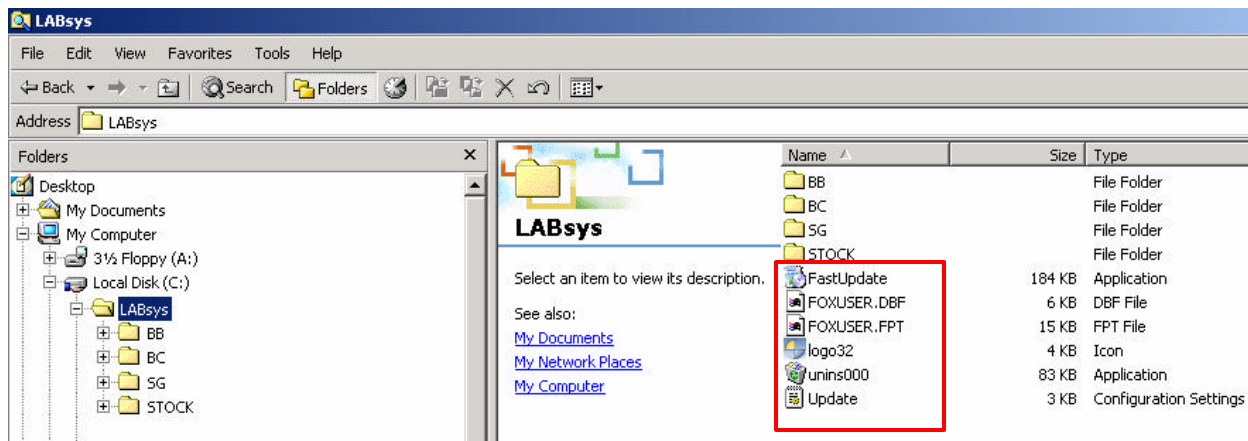


# LABsys™ installation and folders configuration


Many of the problems encountered by our customers come from the fact that the software is not properly installed into their computer. Files corruption and folder duplication may occur during initial setup or while doing an update. This document will help you seek for improper installation or anomalies that may cause the software to be less efficient. In doubt, contact Contek technical department for a full diagnostic.

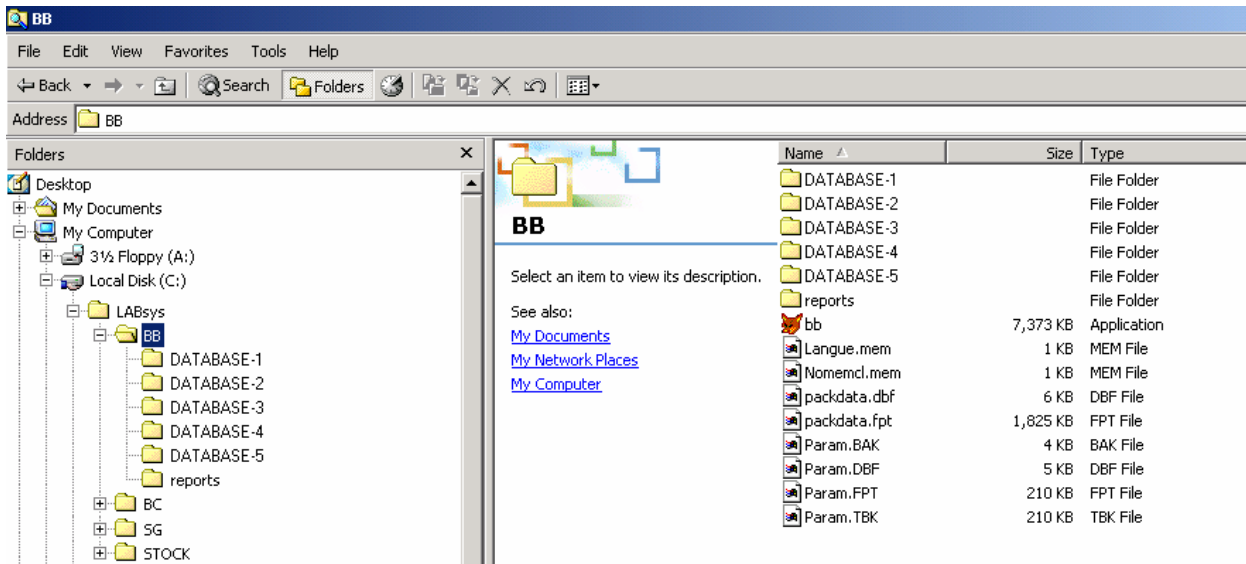
## 1° Local installation

**Both application and databases are installed and managed from your computer.**



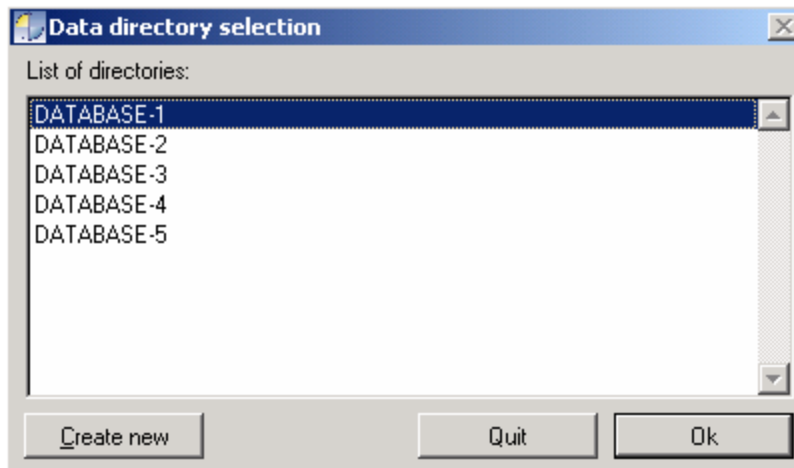
**The files located in the root of LABsys are essential. Make sure you have all of them.**

LABsys™ software is initially installed on your local (C) hard drive. The different modules are then installed on your local (C) hard drive just below the  LABsys.



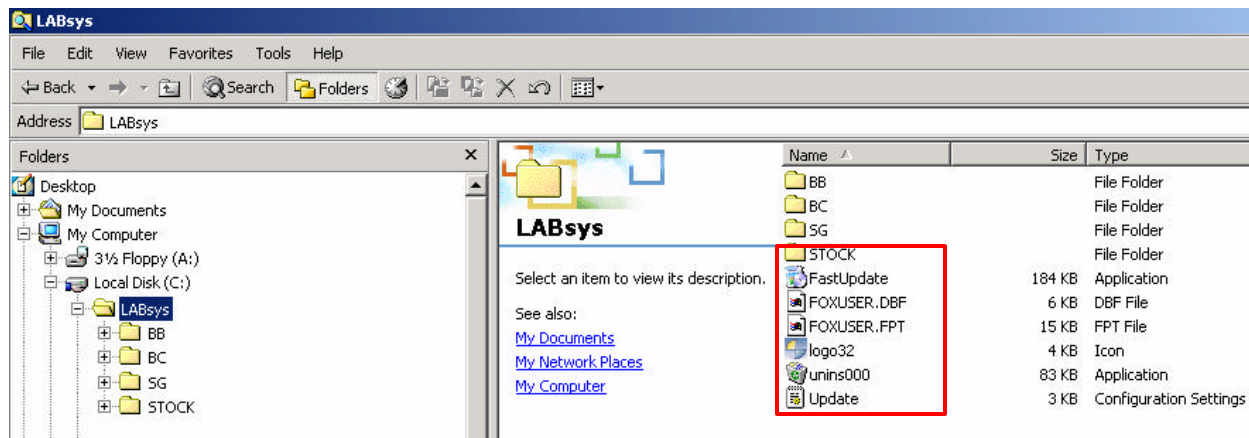
Each module (BB, BC, SG, STOCK) contains a reports and a different number of system files. The files contained in the modules are critical. Make sure the files listed above are available and that no other type of files is present in the folder.<sup>4</sup>

Each module contains your databases. These databases are the exact same ones found by LABsys™ each time you start the system. The databases should only contain files and no other folders.



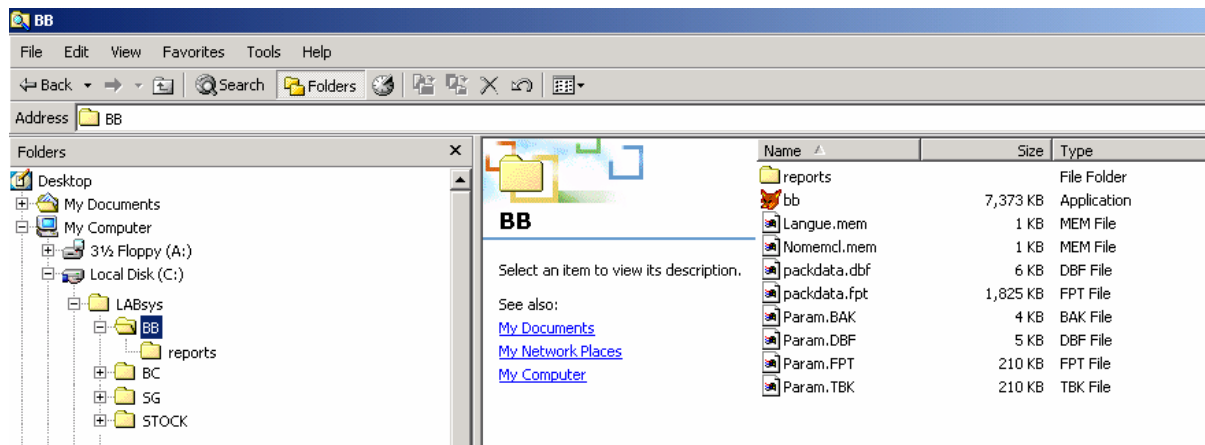
## 2° Network installation

The application is installed locally on your hard drive but your databases are stored and managed from a network connection. The network installation allows different users to share and simultaneously work in the same database.



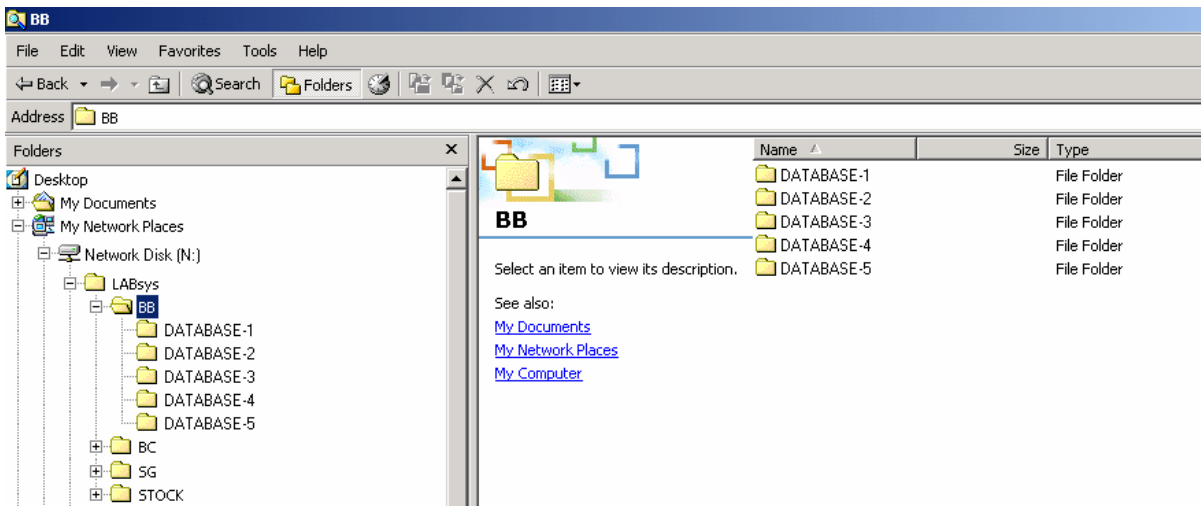
**The files located in the root of LABsys are essential. Make sure you have all of them.**


LABsys™ software is initially installed on your local (C) hard drive. The different modules are then installed on your local (C) hard drive just below the LABsys. The different reports are also managed locally from your hard drive.

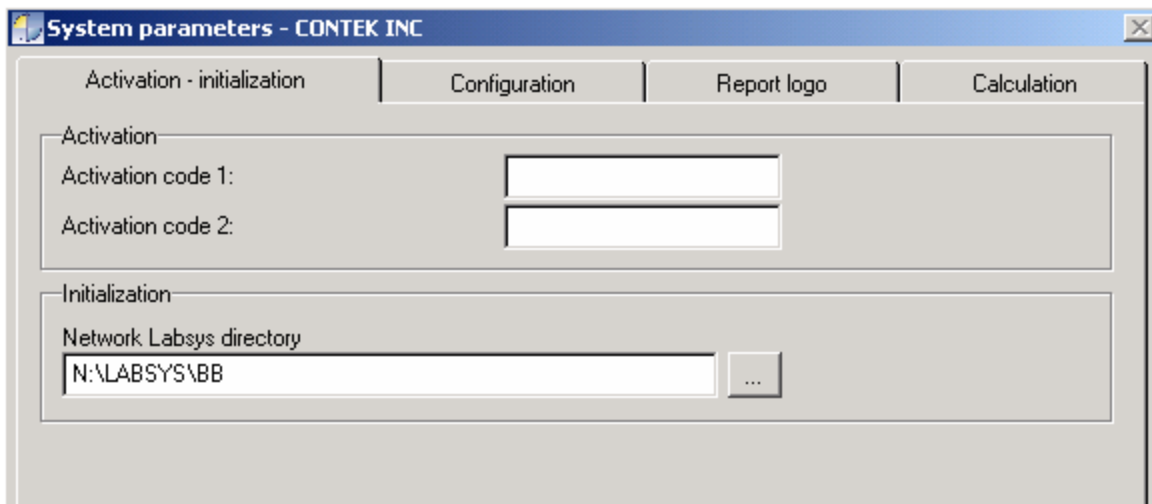


Since the databases are handled from the network, no databases should be present in the (C) hard drive.

The databases are then installed on your network. The software does not need to be installed on the network for the application to work. In this case the software will be looking for the path.



The data directory option from the Tools menu lets you select the location of your databases. Just click on the  button to browse through your network.



Select the Drive in which you have placed your databases. Make sure the network drive is properly mapped so it will reconnect itself at each logon.

